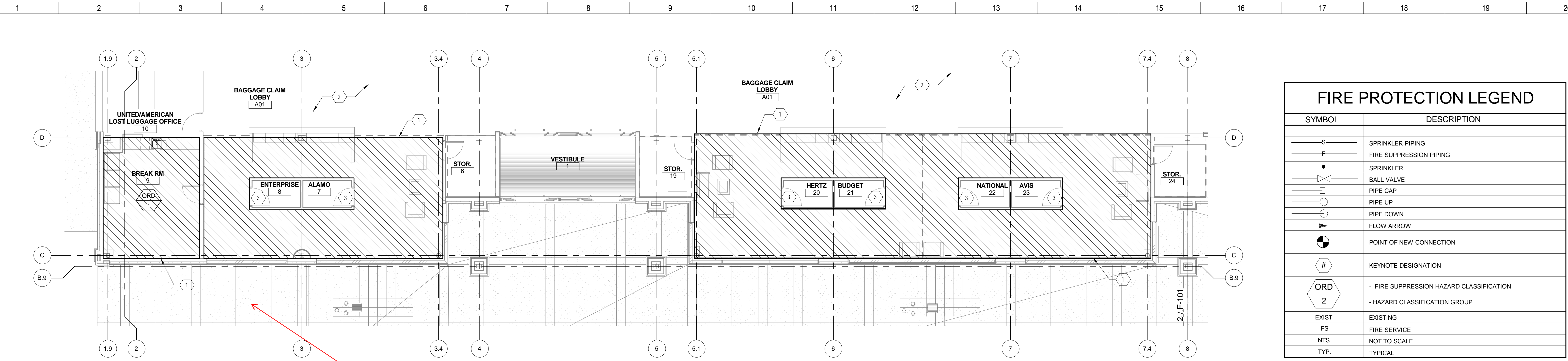


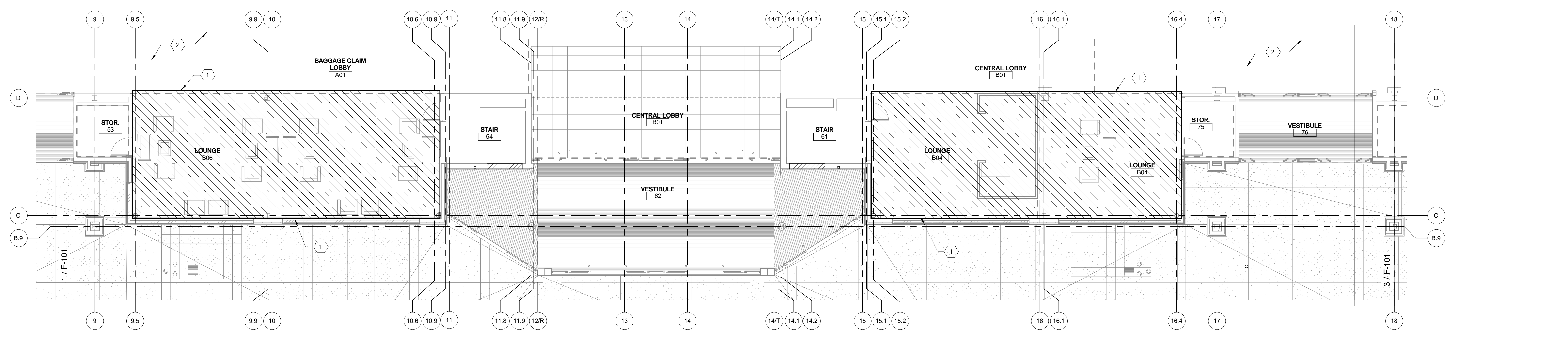
2/2/2015 2:57:23 PM

C:\Revit\Local\Dayton Canopy\074823 MEP\_Leidenheimer\_2014.rvt

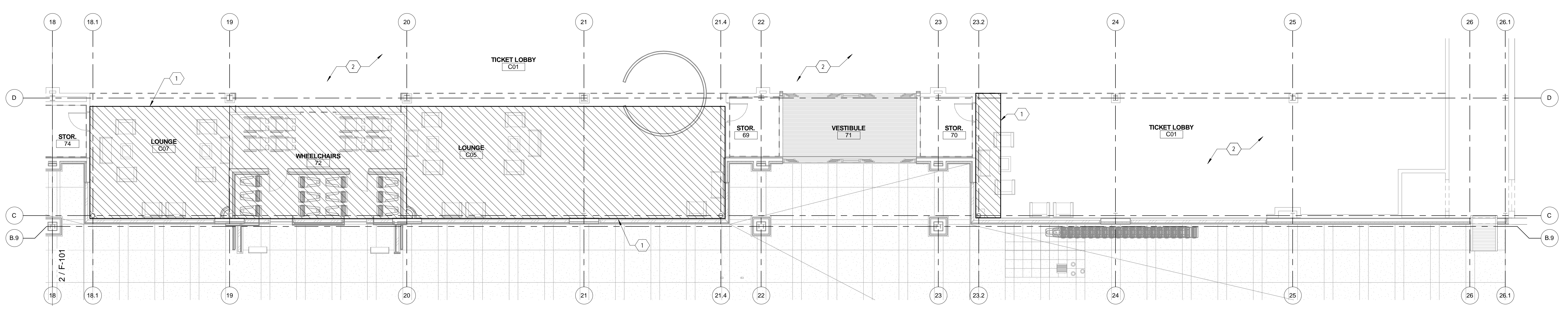


**1 FIRE PROTECTION PLAN AREA "A"**  
1/8" = 1'-0"

Is sprinkler required at the exterior canopy?



**2 FIRE PROTECTION PLAN AREA "B"**  
1/8" = 1'-0"

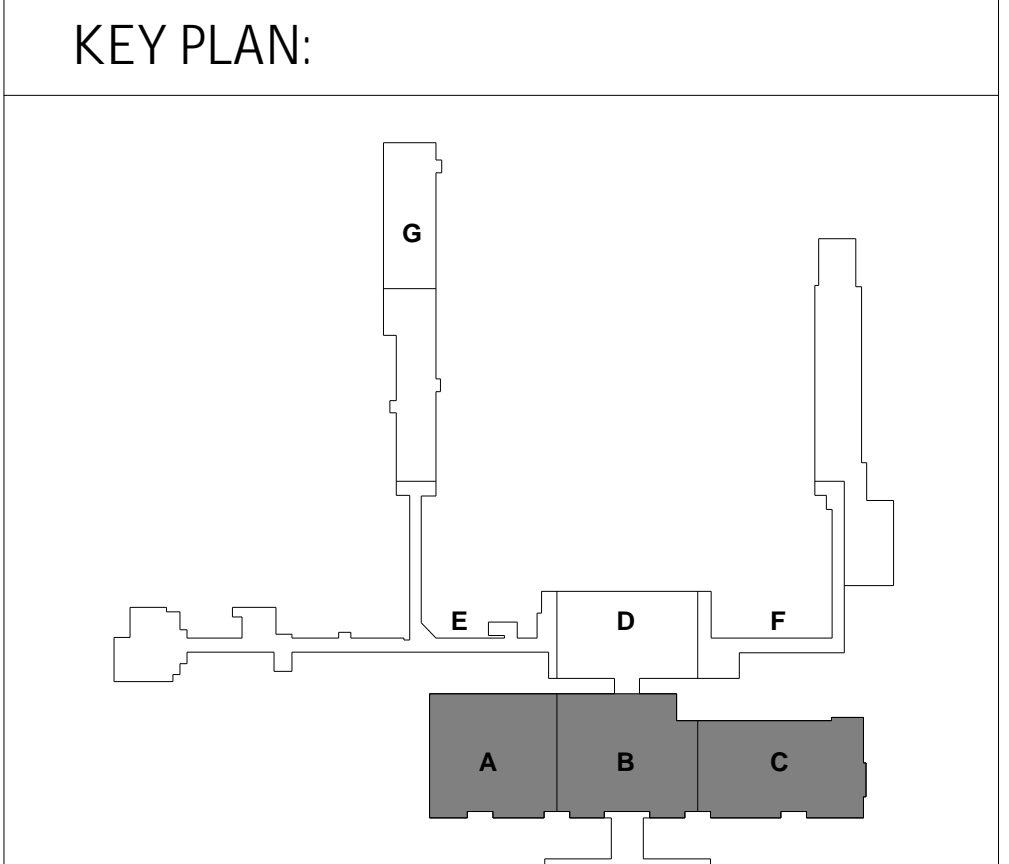


**3 FIRE PROTECTION PLAN AREA "C"**  
1/8" = 1'-0"

FIRE PROTECTION LEGEND	
SYMBOL	DESCRIPTION
—S—	SPRINKLER PIPING
—F—	FIRE SUPPRESSION PIPING
•	SPRINKLER
○	BALL VALVE
—	PIPE CAP
↑	PIPE UP
↓	PIPE DOWN
→	FLOW ARROW
○	POINT OF NEW CONNECTION
#	KEYNOTE DESIGNATION
ORD	FIRE SUPPRESSION HAZARD CLASSIFICATION
2	HAZARD CLASSIFICATION GROUP
EXIST	EXISTING
FS	FIRE SERVICE
NTS	NOT TO SCALE
TYP.	TYPICAL

FIRE PROTECTION INDEX OF DRAWINGS	
SHEET NUMBER	SHEET NAME
F-101	SPRINKLER FLOOR PLAN

- SHEET NOTES:**
- LIMITS OF RENOVATED AREA REQUIRING EXISTING SPRINKLER SYSTEM MODIFICATIONS. MODIFICATIONS INCLUDE, BUT ARE NOT LIMITED TO, REPLACING EXISTING SPRINKLERS AND PIPE BRANCHES TO CONFORM TO NEW ARCHITECTURAL LAYOUTS WHERE NECESSARY. EXISTING PIPING SHALL BE REUSED WHEN POSSIBLE.
  - EXISTING CEILING TO REMAIN. NO FIRE SUPPRESSION WORK REQUIRED.
  - PROVIDE SPRINKLERS IN THIS AREA TO ACCOMMODATE 8'-6" WALLS WITH OPEN CEILING.
- GENERAL NOTES:**
- SPRINKLER CONTRACTOR IS RESPONSIBLE FOR FIELD VERIFYING THE OPERATION, LOCATION AND ROUTING OF THE EXISTING SPRINKLER SYSTEM, INCLUDING RELATED PIPING SYSTEMS, COMPONENTS, SPRINKLERS AND APPURTENANCES. COORDINATE SPRINKLER LOCATIONS WITH ARCHITECTURAL DRAWINGS FOR REFLECTED CEILING PLANS AND CONSTRUCTION. COORDINATE SPRINKLER LOCATIONS WITH CEILING DEVICES (LIGHTING, GRILLES, ETC.). REFER TO FLOOR PLANS, PLAN NOTES, AND GENERAL NOTES FOR ALL WORK ASSOCIATED WITH THE FIRE SUPPRESSION CONTRACT.
  - ALL NEW WORK SHALL BE COMPLIANT WITH RULES AND REGULATIONS OF NFPA-13 AND THE OWNER'S INSURER, OR THE GOVERNING AUTHORITY IF MORE STRINGENT.
  - SPRINKLER CONTRACTOR SHALL MODIFY THE AUTOMATIC WET-PIPE SPRINKLER SYSTEM FOR THE RENOVATED SPACE. THE SPRINKLER CONTRACTOR SHALL ASSIST THE CONSTRUCTION MANAGER IN MAINTAINING THE EXISTING WET-PIPE SPRINKLER SYSTEMS, TEMPORARILY, DURING CONSTRUCTION WHERE CEILINGS OR PARTS OF CEILINGS ARE TO BE REMOVED.
  - SPRINKLERS SHALL BE LOCATED IN THE CENTER OF SQUARE PADS AND AT THE CENTER OR AT QUARTERPOINTS OF THE LONG AXIS OF RECTANGULAR PADS. SPRINKLERS SHALL BE QUICK RESPONSE TWO-PIECE ADJUSTABLE CONCEALED TYPE WITH WHITE FINISH COVERPLATE.
  - ALL PIPING IS ABOVE THE CEILING (AT THE UNDERSIDE OF STRUCTURE IN EXPOSED STRUCTURAL AREAS) UNLESS OTHERWISE INDICATED. SPRINKLER CONTRACTOR SHALL MAKE REQUIRED FLOW TESTS, LAY OUT SYSTEMS, OBTAIN APPROVALS FROM THE AUTHORITY HAVING JURISDICTION AND THE OWNER'S INSURER PRIOR TO BEGINNING ANY FABRICATION OR INSTALLATION WORK.
  - RENOVATION AREAS TO BE TOTALLY SPRINKLERED. EXISTING SPRINKLER SYSTEMS TO BE MODIFIED TO CONFORM TO THE NEW LAYOUT. NEW SPRINKLERS ARE TO BE INTEGRATED INTO THE EXISTING SPRINKLER SYSTEM. ALL EXISTING SPRINKLERS, REMOVED OR DISTURBED IN RENOVATION AREAS, SHALL BE DISPOSED OF AND REPLACED WITH NEW SPRINKLERS.
  - REPLACE ALL SPRINKLERS WITHIN EACH AREA BEING RENOVATED. BASIS FOR DESIGN OF FIRE SUPPRESSION SYSTEMS TO BE LIGHT HAZARD OCCUPANCY, EXCEPT STORAGE ROOMS, AND OTHER AREAS REQUIRED BY CODE WHICH ARE ORDINARY GROUP 1.
  - LIGHT HAZARD: 1500 SQUARE FEET MINIMUM AREA OF OPERATION, 0.10 GPM/SQUARE FOOT DENSITY, 225 SQUARE FEET MAXIMUM PER SPRINKLER. A 100 GPM TOTAL HOSE STREAM ALLOWANCE AT SOURCE SHALL BE USED IN THE DESIGN.
  - ORDINARY HAZARD GROUP 1: 1500 SQUARE FEET MINIMUM AREA OF OPERATION, 0.15 GPM/SQUARE FOOT DENSITY, 130 SQUARE FEET MAXIMUM PER SPRINKLER. A 250 GPM TOTAL HOSE STREAM ALLOWANCE AT SOURCE SHALL BE USED IN THE DESIGN. AREA OF OPERATION REDUCTIONS FOR USE OF QUICK RESPONSE SPRINKLERS SHALL BE PER NFPA GUIDELINES.



No.	Revisions / Submissions	Date

**LWC INCORPORATED**  
434 East First Street Dayton, OH 45402 937.223.6600  
4440 Garwood Place Richmond, IN 47374 765.966.3546

DAYTON INTERNATIONAL AIRPORT  
3600 TERMINAL DRIVE  
VANADALIA, OH 45377  
(937) 454-8209

**PHASE 1 - CANOPY RENOVATION**  
3600 TERMINAL DRIVE

SPRINKLER FLOOR PLAN	
PROGRESS DRAWING NOT FOR CONSTRUCTION 2/2/2015 2:57:23 PM	Comm. No. 14613.00 Date 12-12-2014
Drawn CML	Drawn No. F-101
Checked RED	
© 2013 LWC, INCORPORATED	